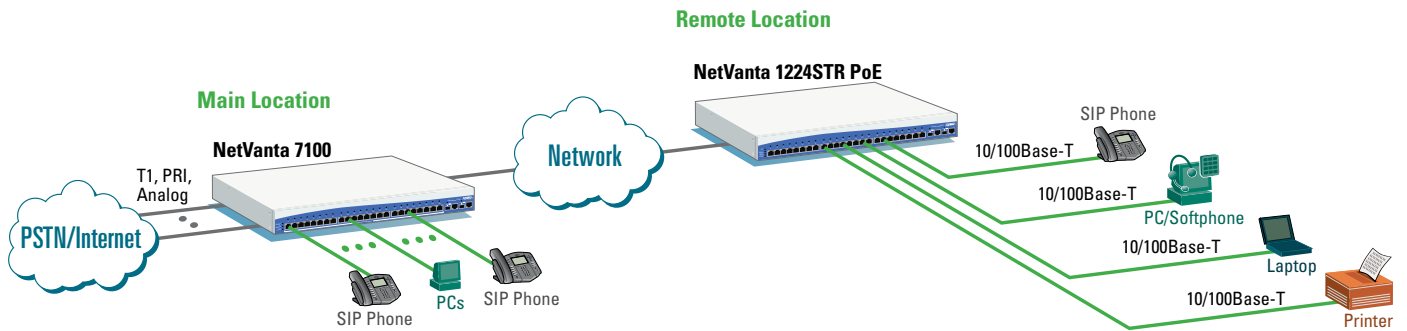


# Branch Office Internetworking



ADTRAN® NetVanta IP telephony and Internetworking products offer an ideal solution for small- to mid-sized businesses to upgrade communications at multiple locations.

Many small businesses have multiple locations or are expanding into more locations. For instance, the main or original location was established and as the business grows, another location is added in a different area in order to better serve customers and offer more convenience.

Using the NetVanta® 7100 at the main business location and a NetVanta 1224 STR PoE switch - router at the remote location provide an affordable way to link sites together; upgrade both voice and data services for the entire company; and improve customer service at each location.

The NetVanta 7100 system at the main location provides centralized call routing and processing as well as voicemail and auto attendant for up to 50 stations. Calls between locations can easily be made using 3 or 4 digit dialing.

Using the NetVanta 7100 at the main location can also significantly reduce monthly costs. With a network between business locations, recurring voice and data costs can be consolidated at the main location so all users share access to high-speed Internet services and PSTN trunks.

The remote NetVanta 1224 STR PoE switch - router provides an economical solution for connecting PCs and IP phones and eliminates the need to add an expensive PBX or Key System at the branch office location. The remote phones will work as if directly connected to the main NetVanta 7100. The NetVanta 1224STR PoE switch - router accommodates up to 24 Ethernet devices and provides full power (15.4 Wssatts per port) to each port so ADTRAN IP phones connect directly to the NetVanta 1224STR PoE without the need for additional, external power devices.

There is now an economical option for growing businesses that need to upgrade communications at one or more locations. The ADTRAN NetVanta IP Telephone and Internetworking solution reduces costs, increases communication capabilities, and improves the overall business.

- Lowers costs
- Unifies communications between locations
- Enables 3-4 digit dialing
- Provides consistent phone and data services at each location
- Eliminates the need for expensive PBX or Key System at remote site
- Offers centralized voicemail
- Shares high-speed Internet access and PSTN trunks





### ADTRAN, Inc.

Attn: Enterprise Networks  
901 Explorer Boulevard  
Huntsville, AL 35806

P.O. Box 140000  
Huntsville, AL 35814-4000

256 963-8000 voice  
256 963-8699 fax

### General Information

800 9ADTRAN  
info@adtran.com  
www.adtran.com

### Pre-Sales

#### Technical Support

800 615-1176 toll-free  
application.engineer@adtran.com  
www.adtran.com/support

### Where to Buy

877 280-8416 toll-free  
channel.sales@adtran.com  
www.adtran.com/where2buy

### Post-Sales

#### Technical Support

888 423-8726  
support@adtran.com  
www.adtran.com/support

### ACES Installation & Maintenance Service

888 874-ACES  
aces@adtran.com  
www.adtran.com/support

### International Inquiries

256 963 8000 voice  
256 963-6300 fax  
international@adtran.com  
www.adtran.com/international

### For the regional office nearest you, visit:

www.adtran.com/regional

ADTRAN and NetVanta are registered trademarks of ADTRAN, Inc. All registered trademarks and trademarks mentioned in this publication are the property of their respective owners.

ADTRAN believes the information in this publication to be accurate as of publication date, and is not responsible for error. Content subject to change without notice.



ADTRAN is an ISO 9001, ISO 14001, and a TL 9000 certified supplier.

EN770G\_AOS\_14.1 December 2006  
Copyright © 2006 ADTRAN, Inc.  
All rights reserved.

# NetVanta® 7100

## Converged IP Office in a Box

## Product Specifications

### IP PBX System Features

- Analog Trunks (Loop Start/Ground Start; FSK Capture of Caller ID name/number; two integral, 10 max.)
- Analog Stations (Loop Start DTMF; 1500 feet over 26 AWG; two integral, 10 maximum)
- Multilevel, eight-port auto-attendant
- Busy Lamp Field/Direct Station Select (BLF/DSS)
- Call Detail Records
- Caller ID Name/Number Override (internal and external)
- Classes of Service
- Codec support includes G.711, G.729, G.722 (wideband)
- Configurable Dial Plan
- Door Relay
- Door Phone
- Email notification of voice mail message
- Global Call Coverage Lists
- IP Stations (50 maximum; SIP hardphone or softphone)
- Least-Cost Routing
- Operator Groups
- Outgoing Number Substitution
- PRI or integrated voice, data PRI
- Personal phone manager Web page
- Ring Groups (ring all, circular hunt group, UCD, executive)
- System Speed Dial
- T1 or integrated voice, data T1
- Trunk Groups
- Variable length extension numbers (three-digit, four-digit)
- Voice mail (12 hours, eight ports)
- Virtual Extensions (20)
- Voice mail accounts (80)
- 16 DSP resources
- 64ms echo cancellation for VoIP calls

### IP Station Features

- Call Drop
- Call Forward (All, Busy, No Answer)
- Call Forward to Outside Line (cell phone)
- Call Hold
- Call Logs
- Call Park Retrieve
- Call Waiting
- Hands free intercom
- Do Not Disturb
- Headset jack
- Missed Call Indicator
- Music on Hold
- Overhead Paging
- Redial
- Speakerphone
- Caller ID Name/Number
- Call Park
- Call Transfer
- Conferencing (3-person)
- Emergency call override
- Message Waiting Light
- Multiple Call Appearances
- Mute
- Personal Call Routing (Call Coverages)
- Volume Control

### Router Features

- RIP V1, RIP V2, OSPF, BGP, and Static routes
- PPP, PPPoE, Frame Relay WAN protocols
- DHCP Client/Server
- Class-based Weighted Fair Queuing, Priority Queuing, Weighted Fair Queuing
- Diffserv aware/mark
- MLPPP/MLFR

### Firewall Features

- Stateful Packet Inspection
- NAT (1:1), NATP (Many:1)
- Denial of Service (DoS) Protection
- Access Control Lists
- SIP aware (B2BUA)

### VPN Features

- 50 tunnels
- IPSec
- DES/3DES/AES encryption

### Ethernet Switch Features

- 10/100Base-T (24)
- 10/100/1000Base-T (2)
- Two SFP slots
- Auto-Rate
- Auto-Duplex
- Auto-MDI/MDI-X
- 802.1d Spanning Tree
- 802.1p Class of Service aware/mark
- 802.1Q VLANs
- 802.3af Power over Ethernet (15.4 watts for each of the 24 ports)

### Management Features

- Command Line Interface (CLI)
- HTTP, HTTPS (Web browser)
- Telnet
- SSH

### Environment

- **Operating Temperature:** 0 to 50 degrees C
- **Storage Temperature:** -20 to 70 degrees C
- **Relative Humidity:** Up to 95%, non-condensing

### Physical

- **Chassis:** 1U, 19" rackmountable metal enclosure
- **Dimensions:** 1.7" H, 17.2" W, 12.8" D
- **Weight:** 11 pounds
- **AC Power:** 100-250 VAC, 50/60 Hz
- **Power:** 450 watts

## Ordering Information

Equipment	Part #
<b>NetVanta 7100</b>	1200796L1
<b>Network Interface Modules (NIMs)</b>	
T1	1202862L1
Dual T1	1200872L1
ADSL	1200869L1
56/64K DDS	1200861L1
<b>Voice Interface Modules (VIMs)</b>	
Analog 4-Port Station (FXS)	1200690L1
Analog 4-Port Trunk (FXO)	1200691L1
Analog 2-Port Trunk/2-Port Station	1200692L1
T1/PRI	1200695L1