

# CaseStudy

Cisco Networking Academy standardizes on ADTRAN's ATLAS 550 for Wide Area Network Emulation

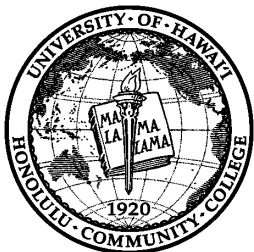
## EDUCATION

### Honolulu Community College



*"I had been searching for a low-cost, reliable product to emulate ISDN, Frame Relay, and analog circuits. The modular ATLAS 550 is a perfect fit because it meets all my WAN emulation needs in a single, easy to use platform. I certainly understand why Cisco Academy has standardized on such a remarkable device for the CCNP certification program."*

Dr. Wayne Lewis,  
CCNP ATC Coordinator  
Honolulu Community  
College



<http://www.hcc.hawaii.edu/>

*Honolulu Community College was the first Cisco Academy location to use ADTRAN's ATLAS 550 for emulation of WAN services including Frame Relay, ISDN and Analog (POTS). Using the ATLAS 550 to emulate a central office, students can get real-world experience in WAN theory and design. The Cisco Networking Academy recently recognized the tremendous benefits of the ATLAS 550 and selected it for inclusion on the required equipment list for the CCNP certification program.*

#### ATLAS 550 OFFERS COST-EFFECTIVE WAN EMULATION

As a Cisco Academy Training Center (CATC), Honolulu Community College had a need to emulate ISDN, Frame Relay, and Analog WAN networks. Existing WAN emulators are too costly and do not provide all of the necessary protocols within a single, easy to use, modular device. In addition, "The cost of live circuits from our local carrier were too expensive and availability was limited," stated Dr. Wayne Lewis of Honolulu Community College, a college within the University of Hawaii system.

Upon reviewing ADTRAN's ATLAS family of integrated access devices, Honolulu Community College selected the ATLAS 550 to emulate all three WAN networks in a single, and most importantly, affordable device. "Using the ATLAS 550, I now have my own 'Central Office,'" states Lewis.

Honolulu Community College may have been the first location to benefit from the ATLAS 550, but other Cisco Academy institutions will soon follow. Cisco Academy's newly initiated CCNP program (Cisco Certified Networking Professional) has recently selected the ATLAS 550 as part of the standard equipment list for the CCNP certification program.

#### ABOUT CISCO'S CERTIFICATION PROGRAM

The CCNP certification program offered through Cisco's academy, provides an advanced networking curriculum covering topics such as installation, configuration, operation, troubleshooting, and managing of enterprise networks. Targeted at colleges and universities, the CCNP Certification is the second of three certified curriculums offered by Cisco. The first is the Cisco Certified Networking Associate (CCNA) for networking fundamentals and targeted at secondary and post-secondary levels. The third is the CCIE, or Cisco Certified Internetworking Expert, which is the highest level certification rating. It covers the most advanced topics for multiprotocol networks and WAN backbone switching for integrated voice, data and Internet traffic.



## About Honolulu Community College

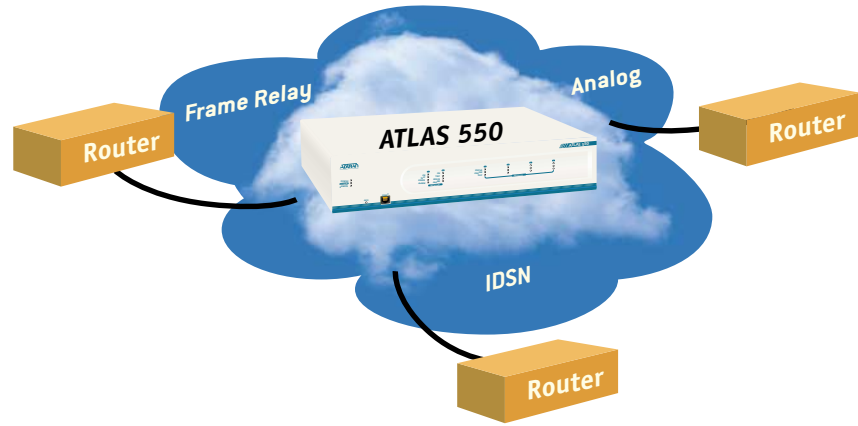
Honolulu Community College is part of the University of Hawaii system of community colleges. The prime mission of the college is to serve as the leading technical training institution in the State of Hawaii. The college offers training and degrees in more than 20 distinct technical areas. Its technical programs cover a wide spectrum—from flight training and boat building to networking and computing. It has been a Cisco Academy Training Center since Summer 1998, and is one of six Cisco Certified Network Professional Academy Training Centers in the United States. The college prides itself on its entrepreneurial spirit and strives to be a positive factor in the economic development of the State of Hawaii.

[www.adtran.com](http://www.adtran.com)

ADTRAN, Inc.  
901 Explorer Blvd.  
P.O. Box 140000  
Huntsville, AL 35814-4000  
800 9ADTRAN  
info@adtran.com

©1999 ADTRAN, Inc. All rights reserved.  
ADTRAN is a registered trademark of ADTRAN, Inc. TSU 120 and TSU 600e are trademarks of ADTRAN, Inc.  
Printed in the U.S.A. on recycled paper.

C1CS0005HCC



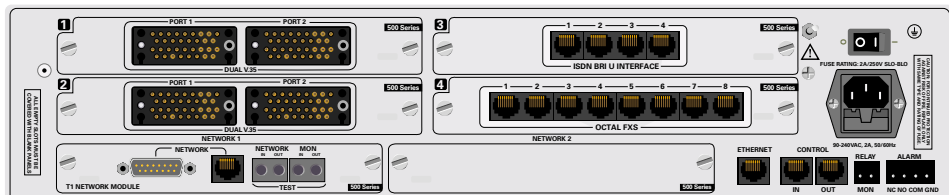
### ABOUT THE ATLAS 550

The ATLAS 550 is a six-slot modular platform that can accommodate numerous combinations of ISDN, Frame Relay, and Analog ports for real-world WAN emulation. Using the easy-to-follow configuration menu, the ATLAS 550 can easily save and upload different configurations to quickly change the Wide Area Network.

#### ATLAS 550 FLEXIBILITY

ISDN BRI	1-16 Circuits
ISDN PRI	1-4 Circuits
Frame Relay	1-4 Circuits (300 DLCIs)
Analog (POTS)	1-32 Circuits

Shortly after a recent Frame Relay lab used in the CCNA certification program, Lewis said, "The students are able to clearly see the function of the DLCIs in the wide area network. The flexibility on the ATLAS 550 allowed them to experiment with both hub-and-spoke and fully meshed topologies. One student mentioned that it was really a unique opportunity to get a chance to work with a Frame Relay switch in a lab setting for a more 'real-world' experience."



For more information on the pre-configured ADTRAN ATLAS 550 for WAN emulation, or to speak to an ADTRAN network engineer, call 800 615-1176.