



DS1 Line Module

Total Access® 5000 DS1 Line Module

Product Features

- Provides 32 DS1 interfaces
- Up to 320 Redundant DS1s per Total Access 5000
- RFC 3985 Pseudowire Emulation Edge-to-Edge (PWE3) support
- Supported by Total Access EMS
- Industry-leading 10-year warranty

The pure IP/Ethernet core of the Total Access 5000 is ideal for supporting emerging services like IPTV and VoIP, but there remains a large embedded base of traditional DS1 circuits deployed. These DS1s are used to support a multitude of different services today including business service delivery, copper transport for digital loop carriers and cell site backhaul. In fact, more than 80% of business complexes today only have copper access available. The Total Access 5000 allows these traditional, high revenue circuits to be transported efficiently over a converged Ethernet infrastructure with newer emerging services like IPTV.

The DS1 Line Module supports Pseudowire Emulation Edge-to-Edge (PWE3 RFC 4553). PWE3 allows the transport of a traditional DS1 circuit over Ethernet. Two structure formats are supported: Circuit Emulation Service over IP (CESoIP) and Structured Agnostic TDM over Packet (SAToP). SAToP provides traditional DS1 circuit trans-

port without visibility to the payload. CESoIP (future availability) provides visibility to the DS0 layer, allowing the DS1 Line Module to groom and pack DS0s from multiple remote terminals before handing off to a traditional TDM interface.

Front panel LEDs include power, card status and loop status for each network uplink. The DS1 Line Module supports craft interface management via the Total Access 5000 System Controller Module (SCM). More comprehensive management is available using the Total Access Element Management System (EMS).

All provisioning is supported through the SCM communications link. All provisioning data is stored in nonvolatile memory for recovery after a power loss and supports optional auto-provisioning via the SCM.



ADTRAN, Inc.

901 Explorer Boulevard
Huntsville, AL 35806

P.O. Box 140000
Huntsville, AL 35814-4000

256 963 8000 voice
256 963 8030 fax

General Information

800 9ADTRAN
info@adtran.com
www.adtran.com

Pre-Sales

Technical Support

888 5ADTRAN
support@adtran.com
www.adtran.com/support

Where to Buy

800 827 0807
www.adtran.com/where2buy

Post-Sales

Technical Support

800 726 8663
support@adtran.com
www.adtran.com/support

Regional Offices

Dallas, TX

972 830 9070

Denver, CO

303 471 9150

Kansas City, KS

800 471 8649

Newark, NJ

800 471 8656

Ontario, Canada

416 290 0585

Quebec, Canada

877 923 8726

San Antonio, TX

888 223 7671

International Inquiries

+1 256 963 8716 voice

+1 256 963 6300 fax

international@adtran.com

www.adtran.com/international



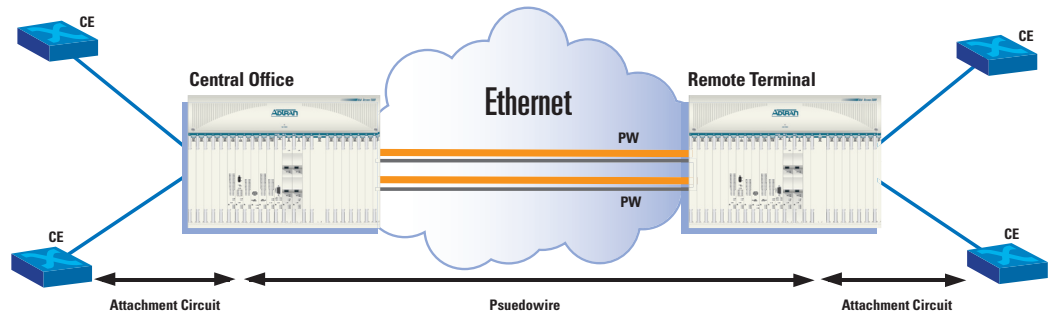
ADTRAN is an ISO 9001, ISO 14001 and a TL 9000 certified supplier.

61187801L1-8A October 2006
Copyright © 2006 ADTRAN, Inc.
All rights reserved.

DS1 Line Module

Total Access Systems™

Total Access 5000 DS1 Line Module



Product Specifications

Mechanical

- **Dimensions:** 9.25 in. H x 0.8 in. W x 9.25 in. D

Interfaces

- **Network Interface:** DSX-1
- **Physical Interface:**
 - Requires LMIO2 CH64 BRIDGED
 - Female CH64 connector for subscriber termination

Regulatory Standards

- NEBS Level 3
- GR-1089 CORE
- GR-63 CORE
- NRTL Listed
- FCC Part 15

Management

- Remote management through SNMP and TL1
- Ethernet interface for SNMP

Environmental

- Operating Temperature: -40°C to +65°C
- Storage Temperature: -40°C to +70°C
- Relative Humidity: Up to 95%, noncondensing

Ordering Information

Equipment	Part #
TA5000 DS1 32-PORT LINE MODULE	1187801L1
TA5000 LMIO2 CH64 BRIDGED	1187400L1

Specifications subject to change without notice. ADTRAN and Total Access are registered trademarks of ADTRAN, Inc. All registered trademarks and trademarks mentioned in this publication are the property of their respective owners.