



T1 8-port Line Module

Total Access 5000 T1 8-port Line Module

Product Features

- Provides eight outside plant T1 channels
- Operates as a protected module (bonding engine only) when configured properly
- Provides RFC 3985 Pseudowire Emulation Edge-to-Edge (PWE3) support
- Supports AMI or B8ZS line coding for each T1 interface
- Supports D4 or ESF framing formats on each T1 interface
- Total Access Element Management System (EMS) Support
- NetVanta 800 Series Support
- Industry-leading ten-year warranty

Although the emergence of next-generation services is driving fiber deployment deeper into the network, there are still many areas where the deployment of fiber is impractical.

The Total Access® 5000 T1 8-Port Line Module provides a copper transport alternative for the Total Access 5000 Multiservice Access and Aggregation Platform or can provide a customer interface in conjunction with the ADTRAN® NetVanta® 800 Series of NTUs. The T1 8-Port Line Module allows carriers to deploy a more cost-effective IP/Ethernet core product in the network, leveraging existing copper transport facilities until fiber can be economically deployed to that location.

The ADTRAN Total Access 5000 T1 8-Port Line Module provides eight independent outside plant conventional T1 interfaces to a customer or between Total Access 5000 systems with or without span power. Each interface consists of a 4-wire T1 interface between a Time Division Multiplex (TDM) network and an IP network.

In addition to supporting a TDM switch interface, the line module supports Pseudowire Emulation Edge-to-Edge (PWE3). This enables transport of DS1 circuits over Ethernet utilizing Structured Agnostic TDM-over-Packet (SAToP). The module implements EFM protocol to fragment and defragment packets into bonded T1 channels.

The T1 8-Port Line Module can operate in redundant mode (bonding engine only) such that an odd and even slot can work together to create an EFM group that allows bond links from both slots into an EFM group on the active card.

Bandwidth across the EFM links is managed dynamically and prioritized via 802.1p and 802.1q, providing Class of Service (CoS) prioritization for voice traffic over data traffic. Additionally, since calls are dynamically set up in the Total Access 5000 only when the line is active, lower priority data traffic can leverage previously unused POTS bandwidth, allowing carriers to offer higher bandwidth and higher revenue services even in copper fed locations.

Front panel LEDs include power, card status, and loop status for each network uplink. The T1 8-Port Line Module supports craft interface management via the Total Access 5000 System Controller Module (SCM). More comprehensive management is available using the Total Access Element Management System (EMS).

All provisioning is supported through the SCM communications link. All provisioning data is stored in nonvolatile memory for recovery after a power loss and optional auto-provisioning is support via the SCM.



T1 8-port Line Module

ADTRAN, Inc.

901 Explorer Boulevard
Huntsville, AL 35806

P.O. Box 140000
Huntsville, AL 35814-4000

256 963 8000
256 963 8030 fax

General Information

800 9ADTRAN
info@adtran.com
www.adtran.com

Pre-Sales Technical Support

888 5ADTRAN
support@adtran.com
www.adtran.com/support

Where to Buy

800 827 0807
www.adtran.com/where2buy

Post-Sales Technical Support

800 726 8663
support@adtran.com
www.adtran.com/support

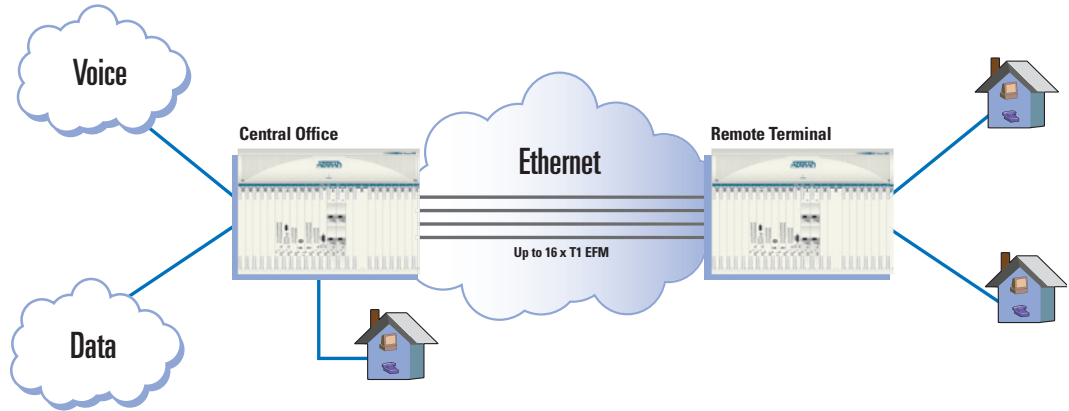
Regional Offices

Dallas, TX
972 830 9070
Denver, CO
303 471 9150
Kansas City, KS
800 471 8649
Newark, NJ
800 471 8656
Ontario, Canada
416 290 0585
Quebec, Canada
877 923 8726
San Antonio, TX
888 223 7671

International Inquiries

+1 256 963 8716
+1 256 963 6300 fax
international@adtran.com
www.adtran.com/global

Total Access 5000 T1 8-port Line Module



Product Specifications

Mechanical

- Dimensions: 9.014 in. H x 0.800 in. W x 9.258 in. D

Interfaces

Network

- Interfaces a TDM to an IP network

Physical

- Requires a LMIO Dual CH50 Rear Panel
- Requires Male CH50 connector

Management

- Remote management through SNMP, craft interface, and TL1 via TA5000 SCM
- Total Access Element Management System (EMS)

Regulatory Standards

- NEBS
- Telcordia GR-63-CORE
- Telcordia GR-1089-CORE

Environmental

- Operational temperature: -40°C to 65°C
- Storage temperature: -40°C to 85°C
- Relative humidity: Up to 95%, noncondensing

Ordering Information

Equipment	Part #
Total Access 5000 T1 8-Port Line Module	1187300L1
Total Access 5000 LMIO2-CH50 Divided Pair	1187401G1
Total Access 5000 LMIO2-CH50 Sequential	1187401G2



TL19.1270



ADTRAN is an ISO 9001, ISO 14001, and a TL 9000 certified supplier.

61187300L1-8B July 2011
Copyright © 2011 ADTRAN, Inc.
All rights reserved.

Specifications subject to change without notice. ADTRAN and Total Access are registered trademarks of ADTRAN, Inc. All registered trademarks and trademarks mentioned in this publication are the property of their respective owners.