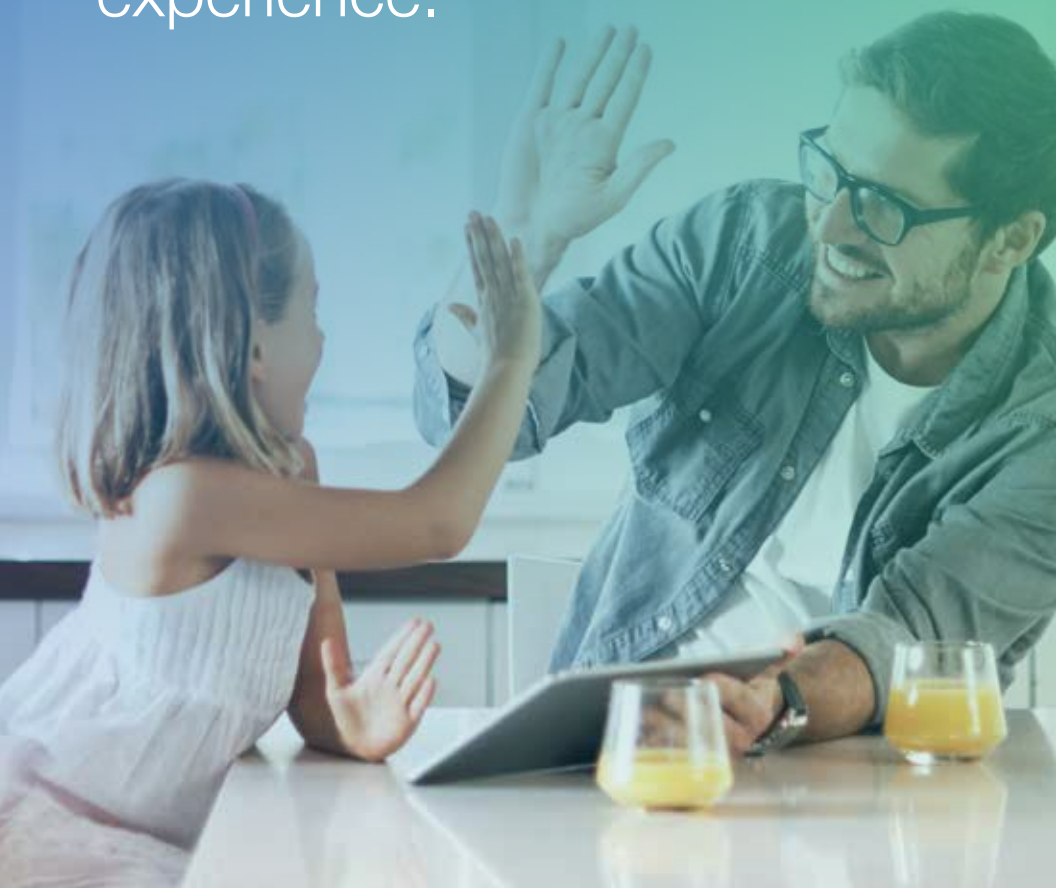


Monetising the Subscriber Edge

Mosaic

Subscriber Experience Suite

Building customer loyalty by implementing a user-driven service model resulting in a simple, intuitive broadband experience.





Orchestrate



Personalise



Streamline



Extend

ADTRAN Mosaic™ Subscriber Experience tools support a user-driven service model using microservices with open APIs and operational logic to provide advanced analytics, software-centric operations, and virtualised service delivery. This makes device installation and service activation ultra-efficient while improving the overall subscriber quality of experience.

Mosaic Activate

Mosaic Activate allows network operators to compete with hyper-scale cloud providers. Enabling zero-touch service delivery and troubleshooting results in a tenfold increase in productivity, greatly accelerating new service activations.

Network Automation

Rapidly accelerate service activations by eliminating redundant provisioning operations

Zero-Touch Activation

Easily eliminate pre-provisioning with multi-system orchestration

Service Self-Provisioning

Allows customers to attach to the network and choose their services independently



Mosaic Subscriber Insight

Mosaic Subscriber Insight enables service providers to use intelligence about their network and subscribers to dramatically improve business operations. This cloud-based solution enables service providers to reduce operational costs, drive new service adoption, and increase customer loyalty.



Layer 7 Application Visibility

Easily gather per subscriber, real-time data utilisation information

Reverse Revenue Leakage

Quickly identify subscriber service inconsistencies and improperly provisioned circuits

Billing System Integration

Swiftly recognise billing system discrepancies

Capacity Predictions

Proactively manage your network using predictive analytics

Target Marketing

Identify patterns in subscriber behaviour and usage



Mosaic Device Manager





Mosaic Device Manager provides visibility into the connected home enabling simplified Wi-Fi troubleshooting and residential device management. This results in reduced trouble calls, truck rolls, and unnecessary device swaps.

Hardware Management

Remotely configure and monitor customer devices. Easily perform firmware control and remote troubleshooting.

Customer Premises Analytics

Quickly monitor connected clients and easily analyse the home Wi-Fi network.

Wi-Fi Analytics

Easily monitor channel utilisation, check signal strength and perform network healing.



Whole Home Wi-Fi

ADTRAN Whole Home Wi-Fi devices aid in providing a superior subscriber experience. With self-healing mesh, you can provide your subscribers with a Wi-Fi experience that adapts to their every need.



Self-Forming

Connect the ADTRAN 810 Mesh APs with the ADTRAN 810-RG and other APs with the push of a button.



Self-Healing

With auto AP and band steering, experience a superior Wi-Fi experience no matter how your customers move about their home.



Multi-Purpose

ADTRAN 810 Mesh APs can also serve as low-cost gateways supporting LAN/WAN.





MOSAIC[®]

Open. Programmable. Scalable.

Software-Defined Access by **ADTRAN**

ADTRAN, Inc.
901 Explorer Boulevard
Huntsville, AL 35806

General Information
+1 256 963 8000
www.adtran.com/contactus

Headquarters – EMEA
ADTRAN GmbH
Erika-Mann-Str. 25
80636 Munich-Germany
+49 89 411097 111
sales.europe@adtran.com

**Central-/East and
West Europe**
+49 89 411097 111
sales.cewe@adtran.com

South Europe
+49 89 411097 111
sales.southeurope@adtran.com

North Europe and CIS
+49 89 411097 111
sales.ne@adtran.com

Middle East and Africa
+49 89 411097 111
sales.mea@adtran.com

Asia
+61 3 9658 0500
sales.asia@adtran.com

Australia/New Zealand
+61 3 9658 0500
sales.australia@adtran.com

IN10691A October Copyright © 2018 ADTRAN, Inc. All rights reserved. ADTRAN believes the information in this publication to be accurate as of publication date, and is not responsible for error. Specifications subject to change without notice. ADTRAN[®] and the other trademarks listed at www.adtran.com/trademarks are registered trademarks of ADTRAN, Inc. or its affiliates in various countries. All other trademarks mentioned in this document are the property of their respective owners.

ADTRAN warranty duration and entitlements vary by product and geography. For specific warranty information, visit www.adtran.com/warranty.

ADTRAN products may be subject to U.S. export controls and other trade restrictions. Any export, re-export, or transfer of the products contrary to law is prohibited. For more information regarding exportation of ADTRAN items (e.g. commodities, technology, software), please visit www.adtran.com/exportlicense.

ADTRAN
Certified
Supplier



ISO 9001
ISO 14001
TL 9000

TL9000
TL 9001 2010