



WIRELESS SOLUTIONS FOR
ANYONE, ANYWHERE.

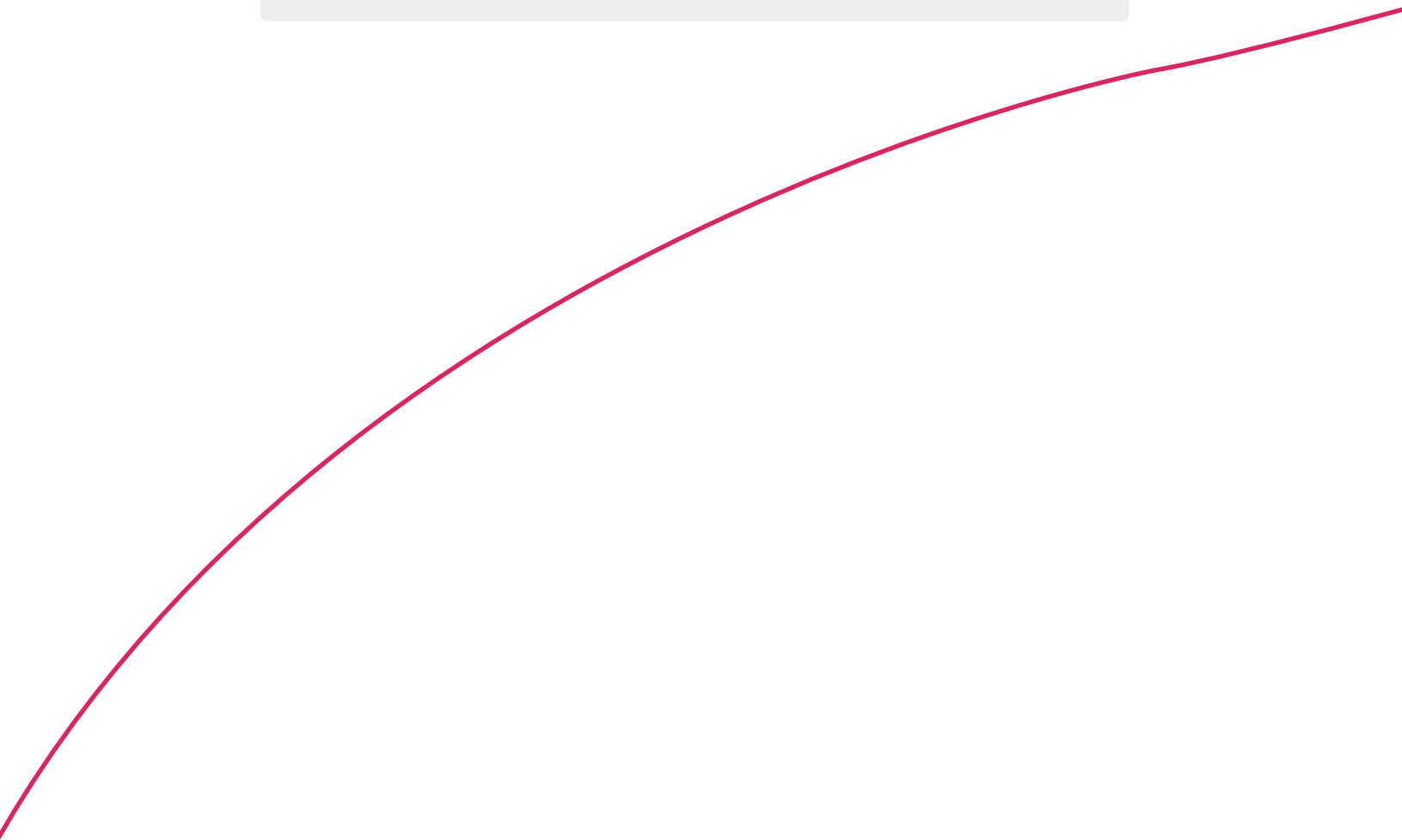


FW-300i
FW-300i
~~~~~

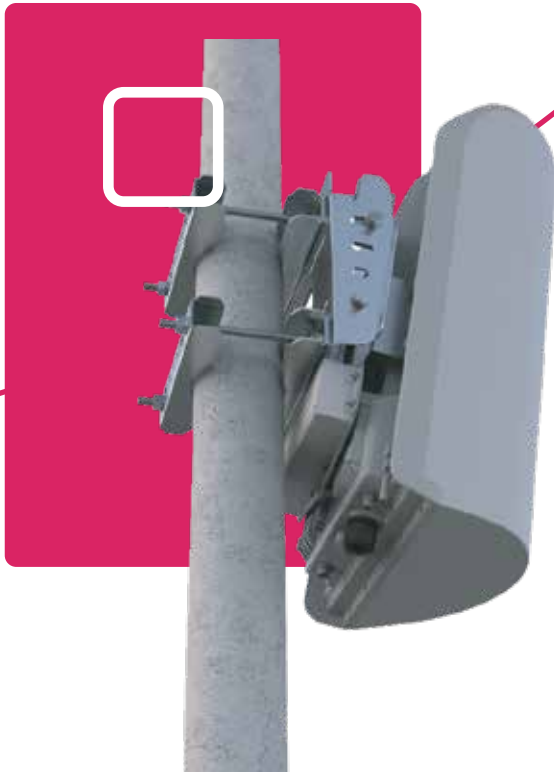
# YOUR NETWORK. OUR SOLUTIONS.

## About BLiNQ Networks

BLiNQ Networks is a pioneer manufacturer of CBRS-certified fixed access and mobile broadband wireless equipment, providing industry-leading price & performance in LTE and 5G-ready solutions.



# FW-300i

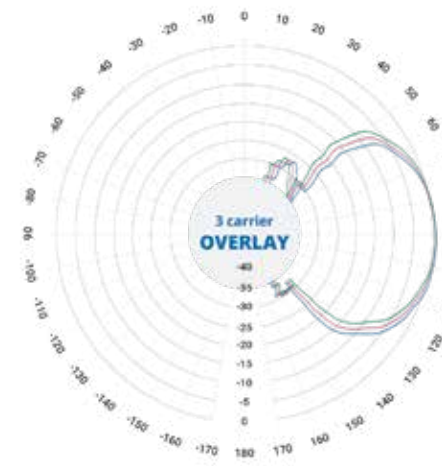
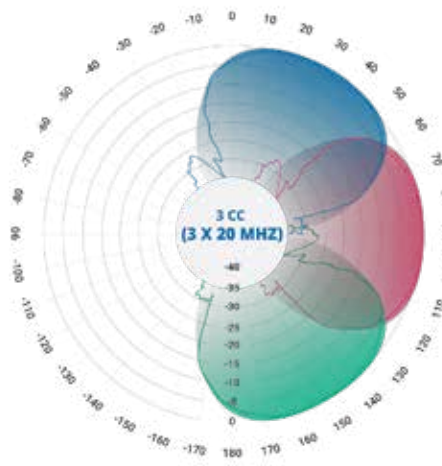


## **3X COVERAGE & CAPACITY AT 1/3RD THE COST**

The FW-300i is a single piece of hardware that is easy to set up, fits anywhere, and provides incredible network capacity. This simple solution fits almost anywhere. From the side of a building or water tower and is ready to go immediately, giving 3x the capacity at 1/3rd the price. Whether you want to expand your network to remote communities or to busy urban intersections, this OnGo Certified product helps you bring LTE connectivity to anyone, anywhere.

# FW-300i

## USE CASE CONFIGURATIONS



| MODEL SERIES                           |                                                                                                                                                                                                                     |
|----------------------------------------|---------------------------------------------------------------------------------------------------------------------------------------------------------------------------------------------------------------------|
| BASE STATION                           | FW-300i                                                                                                                                                                                                             |
| RADIO SPECIFICATION                    |                                                                                                                                                                                                                     |
| Frequency Band                         | 3.40-3.80 GHz (LTE Band 42/43)<br>3.55-3.70 GHz (LTE Band 48 - CBRS)                                                                                                                                                |
| Transmit Power                         | 17 dBi Integrated Antenna - up to 56 dBm EIRP/Sector<br>LTE Band 42/43: -10 dBm up to +36 dBm per TX port<br>(add 3 dB for aggregate power)<br>LTE Band 48: -10 dBm up to +33 dBm<br>(add 3 dB for aggregate power) |
| Channel Bandwidth                      | 3 x 10 MHz or 3 x 20 MHz (15 MHz*)                                                                                                                                                                                  |
| MIMO                                   | 6TX x 6RX per unit<br>2TX x 2RX per sector (several possible MIMO configurations)                                                                                                                                   |
| LTE Compliance                         | 3GPP Release 10 (SW upgrade to Release 13)                                                                                                                                                                          |
| PERFORMANCE & ATTRIBUTES               |                                                                                                                                                                                                                     |
| Connected/Active UEs                   | Up to 96 active users per sector; 288 active users per box                                                                                                                                                          |
| Carrier Aggregation                    | Supports contiguous and non-contiguous 1CC, 2CC, 3CC, covers full CBRS band (150 MHz) and full ETSI (B42/43) spectrum                                                                                               |
| Throughput DL TDD Config 2-7 (default) | 105 Mbps                                                                                                                                                                                                            |
| Throughput UL TDD Config 2-7 (default) | 13 Mbps                                                                                                                                                                                                             |
| Operating Mode                         | TD-LTE                                                                                                                                                                                                              |
| Power Consumption                      | 180 W maximum                                                                                                                                                                                                       |
| Power                                  | 48 VDC                                                                                                                                                                                                              |
| Connectivity                           | Default: 1 x Copper 1000BaseT; Optional: 1 x SFP                                                                                                                                                                    |
| Synchronization                        | Integral GPS antenna (GPS, GLONASS, BeiDou),<br>Optional: External GPS, 1588v2                                                                                                                                      |
| CBRS                                   | CBSD Type B SAS Support                                                                                                                                                                                             |
| Embedded EPC                           | Software Option                                                                                                                                                                                                     |

# FW-300i

## SPECIFICATIONS



| OA&M                                          |                                                  |                                                      |
|-----------------------------------------------|--------------------------------------------------|------------------------------------------------------|
|                                               | <b>Configuration</b>                             | WebUI/CLI, radio and Ethernet performance monitoring |
|                                               | <b>EMS Integration</b>                           | SNMP v2c                                             |
|                                               | <b>OAM Protocols</b>                             | NETCONF, HTTP(S), (S)FTP, SSH, TR-069/TR-196         |
| ANTENNA SPECIFICATIONS CBRS BANDS 42/43/46/48 |                                                  |                                                      |
|                                               | <b>Gain</b>                                      | 17 dBi                                               |
|                                               | <b>Azimuth coverage (-5 dB)</b>                  | 180°                                                 |
|                                               | <b>Azimuth Beamwidth (-3 dB)</b>                 | 45°                                                  |
|                                               | <b>Azimuth Beamwidth (-5 dB)</b>                 | 60°                                                  |
|                                               | <b>Elevation Beamwidth (- 3 dB)</b>              | 10°                                                  |
|                                               | <b>Electrical Downtilt</b>                       | 0°                                                   |
|                                               | <b>Azimuth Sidelobe</b>                          | < -25 dB (Typ.)                                      |
|                                               | <b>Front-to-Back Ratio @ 180°</b>                | > 30 dB (Typ.)                                       |
|                                               | <b>Co-Polar Port-to-Port Isolation</b>           | 15 dB (Typ.)                                         |
|                                               | <b>Cross-Polarization Port-to-Port Isolation</b> | > 20 dB (Typ.)                                       |
|                                               | <b>Max. VSWR</b>                                 | 1.5:1                                                |
|                                               | <b>Polarization</b>                              | Dual Pol 45°                                         |
|                                               | <b>Lightning Protection</b>                      | DC Ground                                            |
| MECHANICAL                                    |                                                  |                                                      |
|                                               | <b>Dimensions (LxWxD)</b>                        | 13.78" x 22.4" x 8.9" (350 mm x 570 mm x 227 mm)     |
|                                               | <b>Survival Wind Speed</b>                       | > 124 mph (200 km/hour)                              |
|                                               | <b>Weight</b>                                    | 26.5 lbs. (12.0 Kg)                                  |
|                                               | <b>Operational Temperature</b>                   | -40 to 60 °C (-40 to 140 °F )                        |
|                                               | <b>Mechanical Uptilt/Downtilt</b>                | 0° - 10°                                             |



---

**CONTACT US**

Tel: +1 416.214.4204  
info@blinqnetworks.com  
www.blinqnetworks.com

140 Renfrew Drive, Markham  
ON, L3R 6B3, Canada  
© 2018-2020 BLiNQ Networks a CCI company